

Features:

- Stage monitors, side-fill and P.A. applications.
- Compact size, flat front.
- Aluminum exponential horn.
- 25 mm (1") throat.
- 90°(H) x 60°(V) nominal coverage.



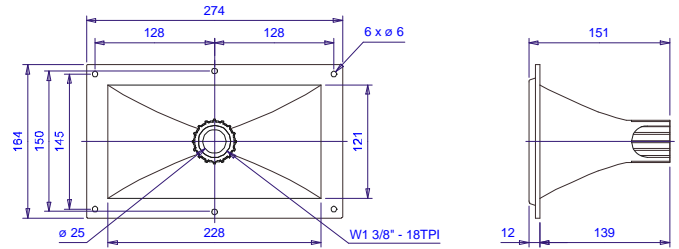
SPECIFICATIONS

Nominal coverage		
Horizontal	90	degrees
Vertical	60	degrees
Directivity		
Directivity factor (Q)	9	
Directivity index (Di)	9	dB
Sensitivity		
On driver, 1W @ 1m, on axis ¹	106	dB SPL
Frequency response @ -10 dB ²	800 to 18,000	Hz
Throat diameter	25 (1)	mm (in)
Minimum recommended crossover ³	1,200	Hz

¹ Measured with D205TI driver, 1,200 - 3,000 Hz average.

² Measured with D205TI driver.

³ With D205TI driver.



Dimensions in mm.

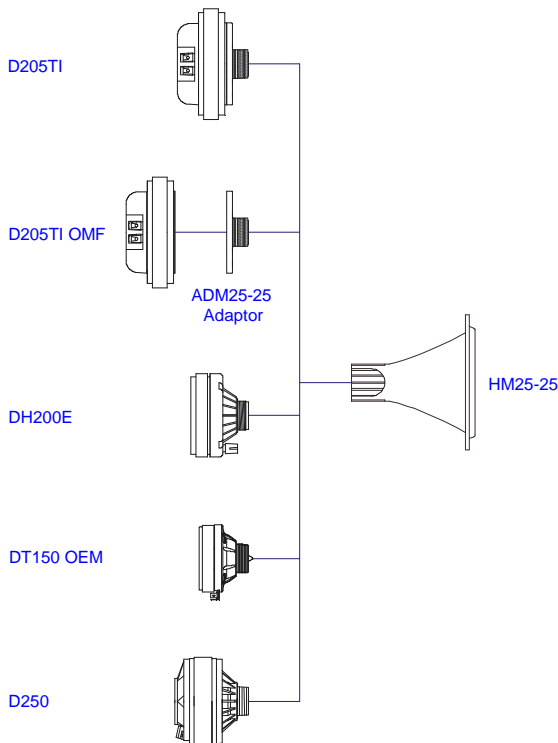
ADDITIONAL INFORMATION

Horn material	Aluminum
Horn finish	Black epoxy
Overall dimensions	
Mouth height	164 (6.46) mm (in)
Mouth width	274 (10.79) mm (in)
Length	151 (5.95) mm (in)
Volume displaced by horn	1,2 (0.04) l (ft ³)
Net weight	810 (1.79) g (lb)
Gross weight	980 (2.16) g (lb)
Carton dimensions (W x D x H)	17 x 17 x 28 (6.7 x 6.7 x 11.0) cm (in)

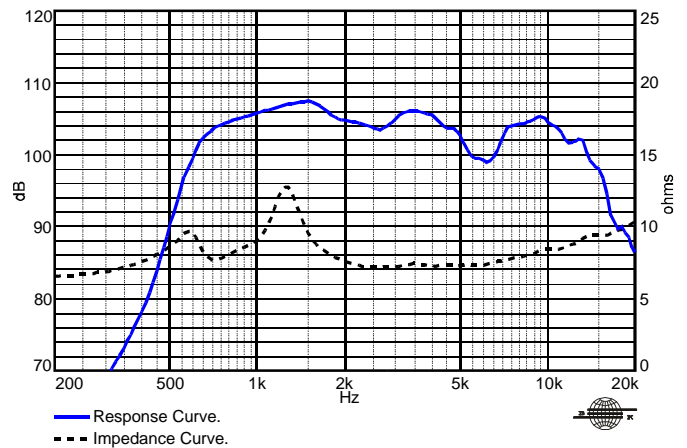
MOUNTING INFORMATION

Mechanical connection of driver	Screw-on 1 ³ / ₈ " - 18 TPI
Baffle cutout dimensions (front mount)	
Horizontal	235 (9.25) mm (in)
Vertical	125 (4.92) mm (in)

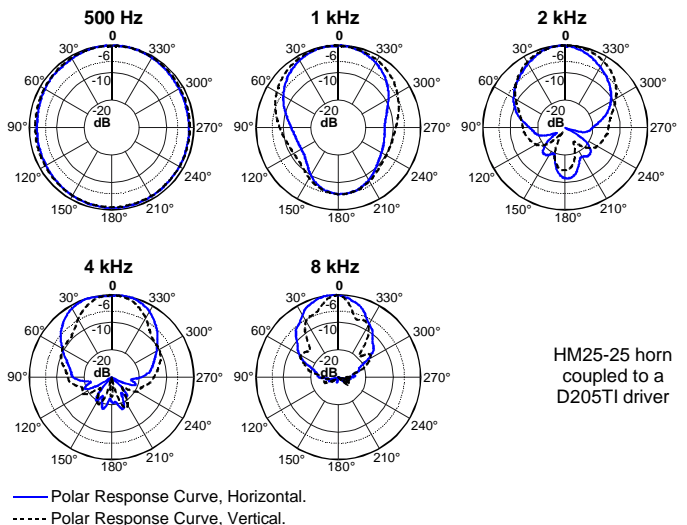
HORN x DRIVER CONNECTION



RESPONSE AND IMPEDANCE CURVES W/ D205TI DRIVER INSIDE AN ANECHOIC CHAMBER, 1 W / 1 m



POLAR RESPONSE CURVE



HM25-25 horn coupled to a D205TI driver